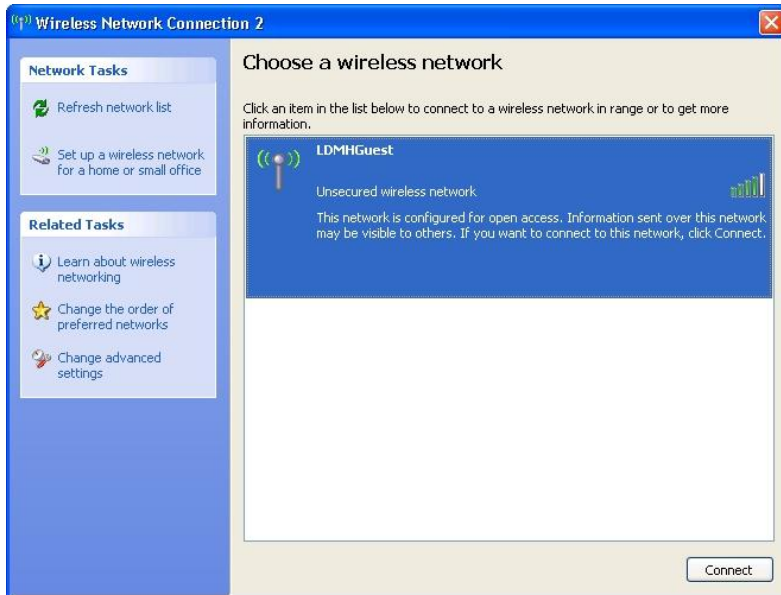


LDMH Wireless Guest Network

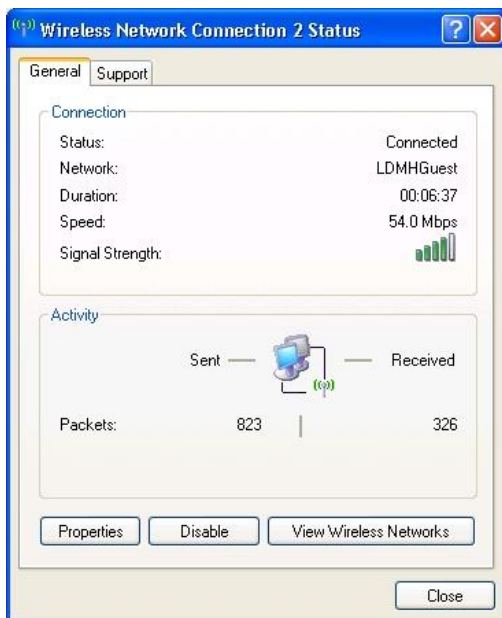
Leamington District Memorial Hospital now offers guest wireless internet access. The person has to be an inpatient at LDMH. Alternatively they may also request access through Information Services.

The following are the instructions for setting up your wireless laptop:

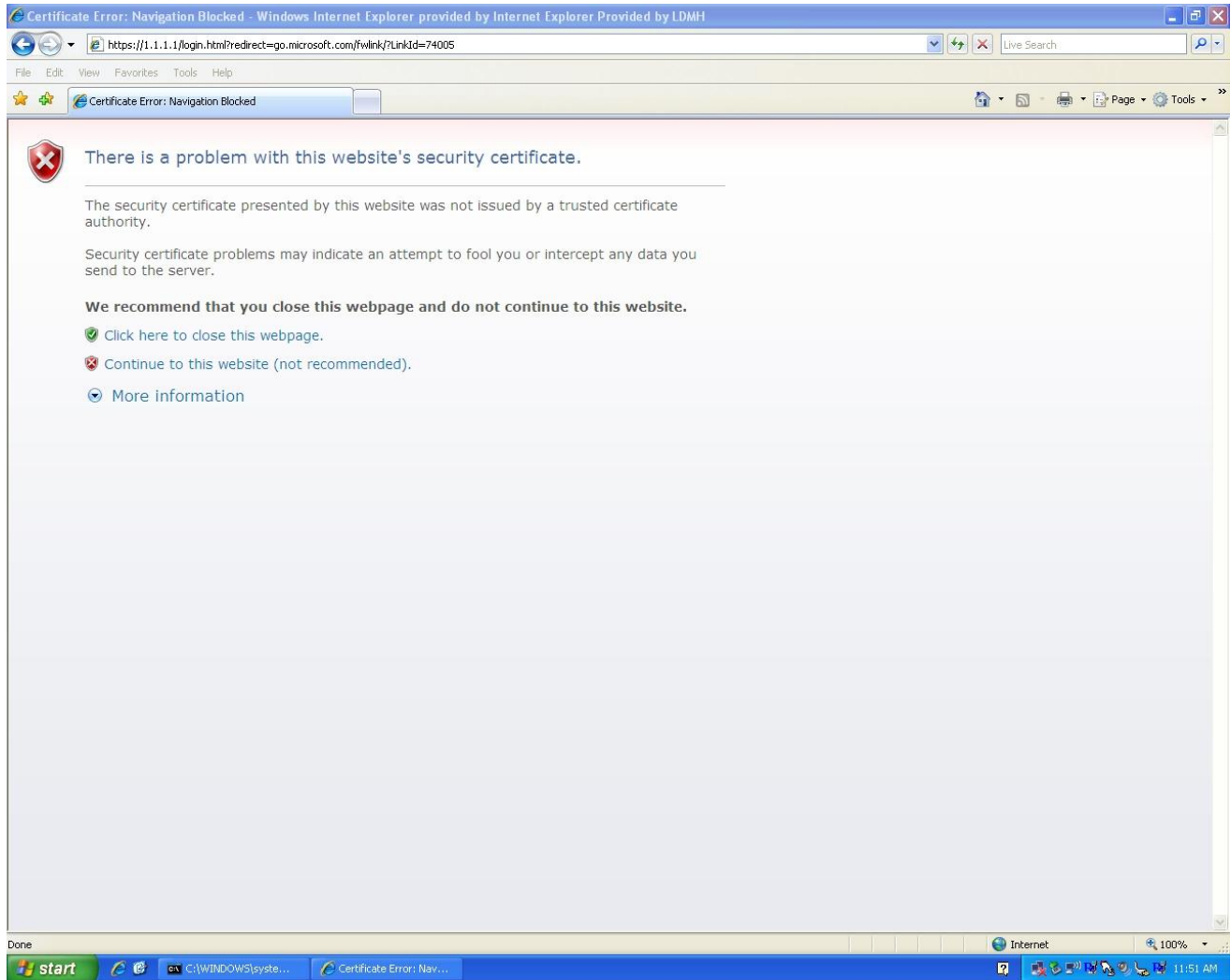
1. Click on your wireless client (as per example below). You will see a network with the SSID of **LDMHGuest**.



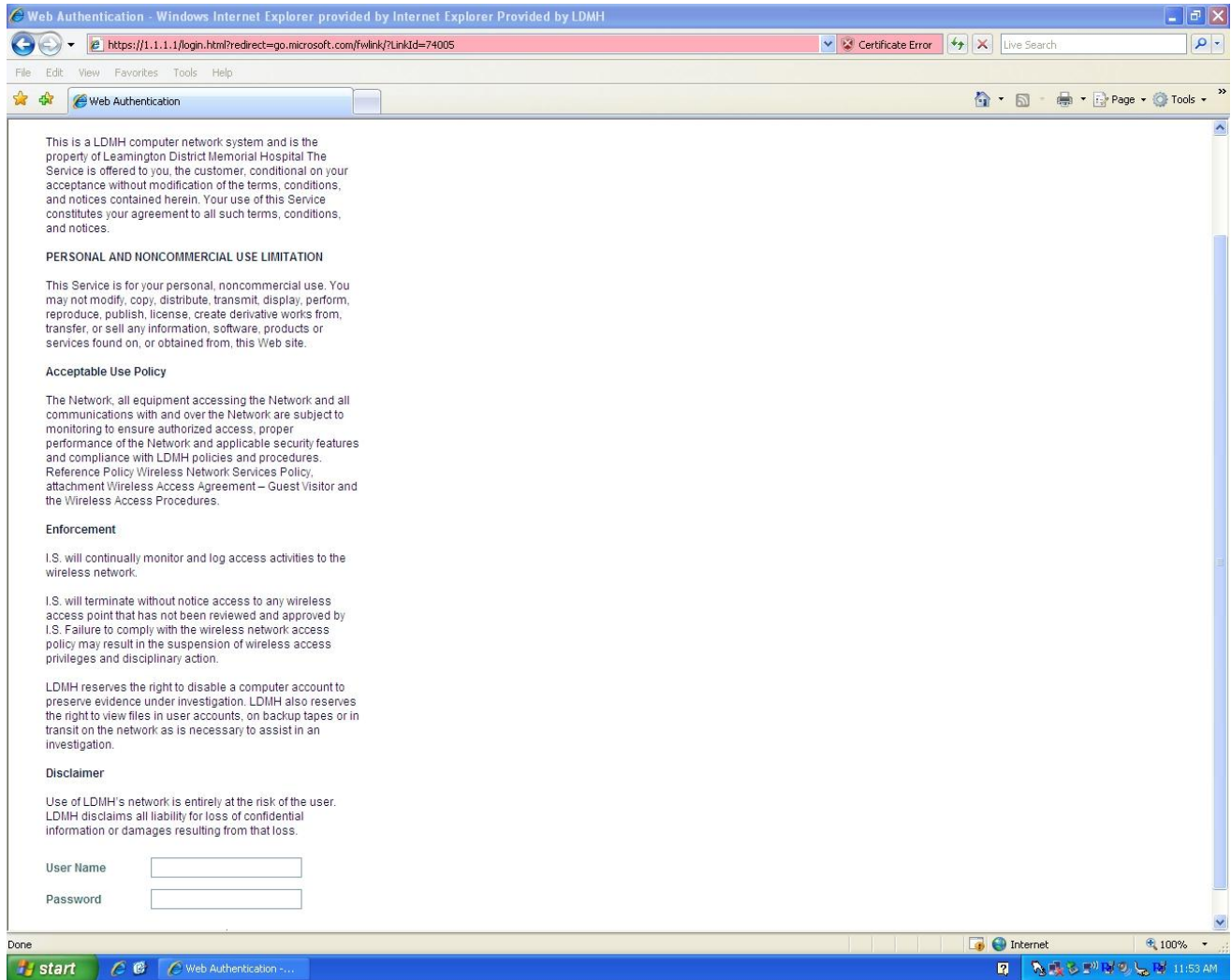
2. Establish a connection to that network.



3. Launch a web browser. You should see an error with the Website's Security Certificate. Please click on '**Continue to this website (not recommended)**' to connect to the disclaimer page.



4. You will be redirected to a disclaimer page with fields for Username and Password.



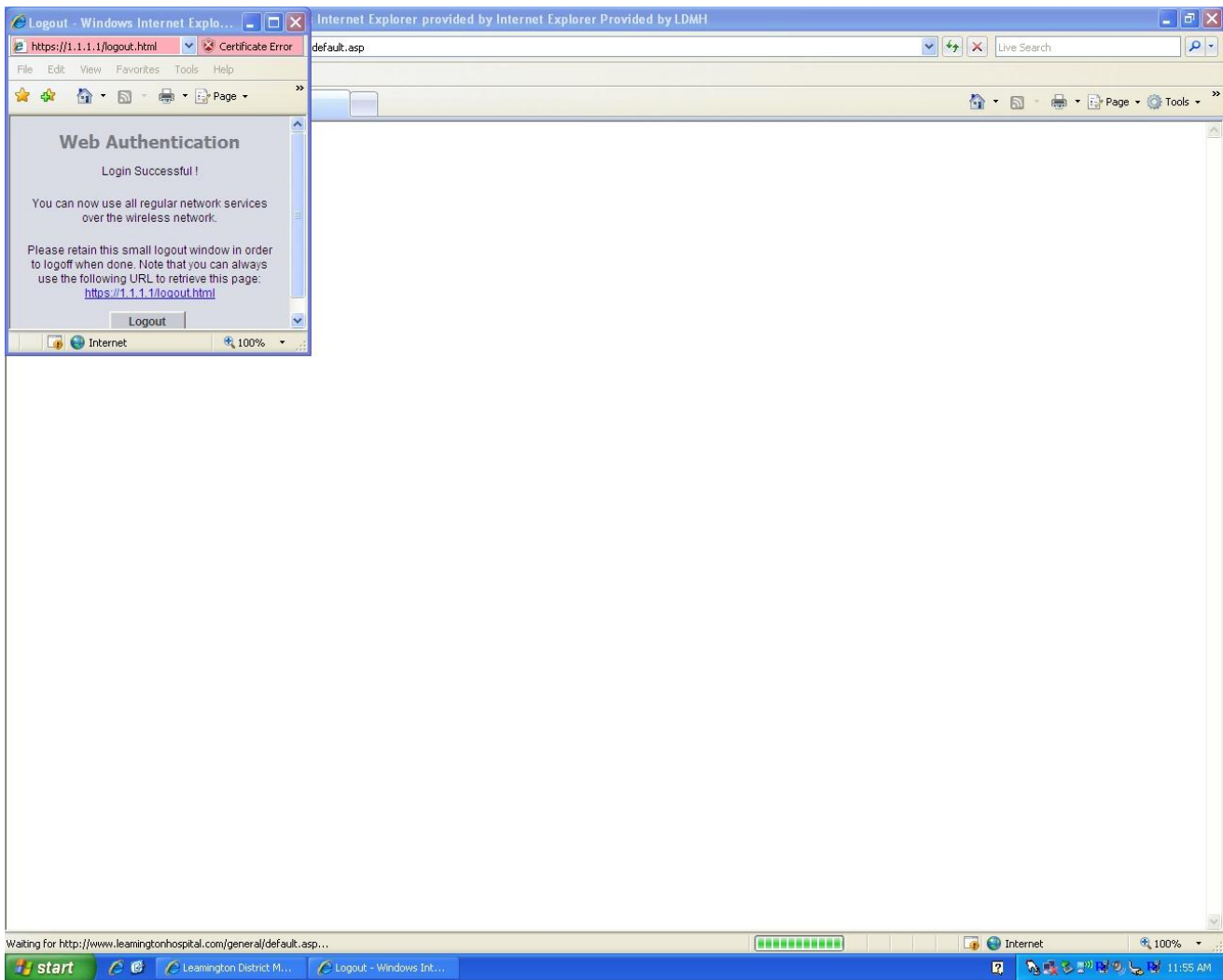
5. Please enter your username and password as below (**Hint: this information is available on patient bracelets**):

Username: Medical Record Number (MRN) with **NO leading zero's**.

Password: Account Number.

6. Hitting the Submit button signifies that the user has agreed to LDMH's Wireless Policy.

7. After a successful login the following window should appear and you should be redirected to www.learningtonhospital.com.



8. The wireless computer should have full internet capabilities.

PLEASE NOTE:

This access is valid for a 24 hour period. After the 24 hours has passed, the user must re-authenticate to the network. This system will allow multiple simultaneous logins with the username and password specified above.

Rev. 30Dec08